

ANEXO C

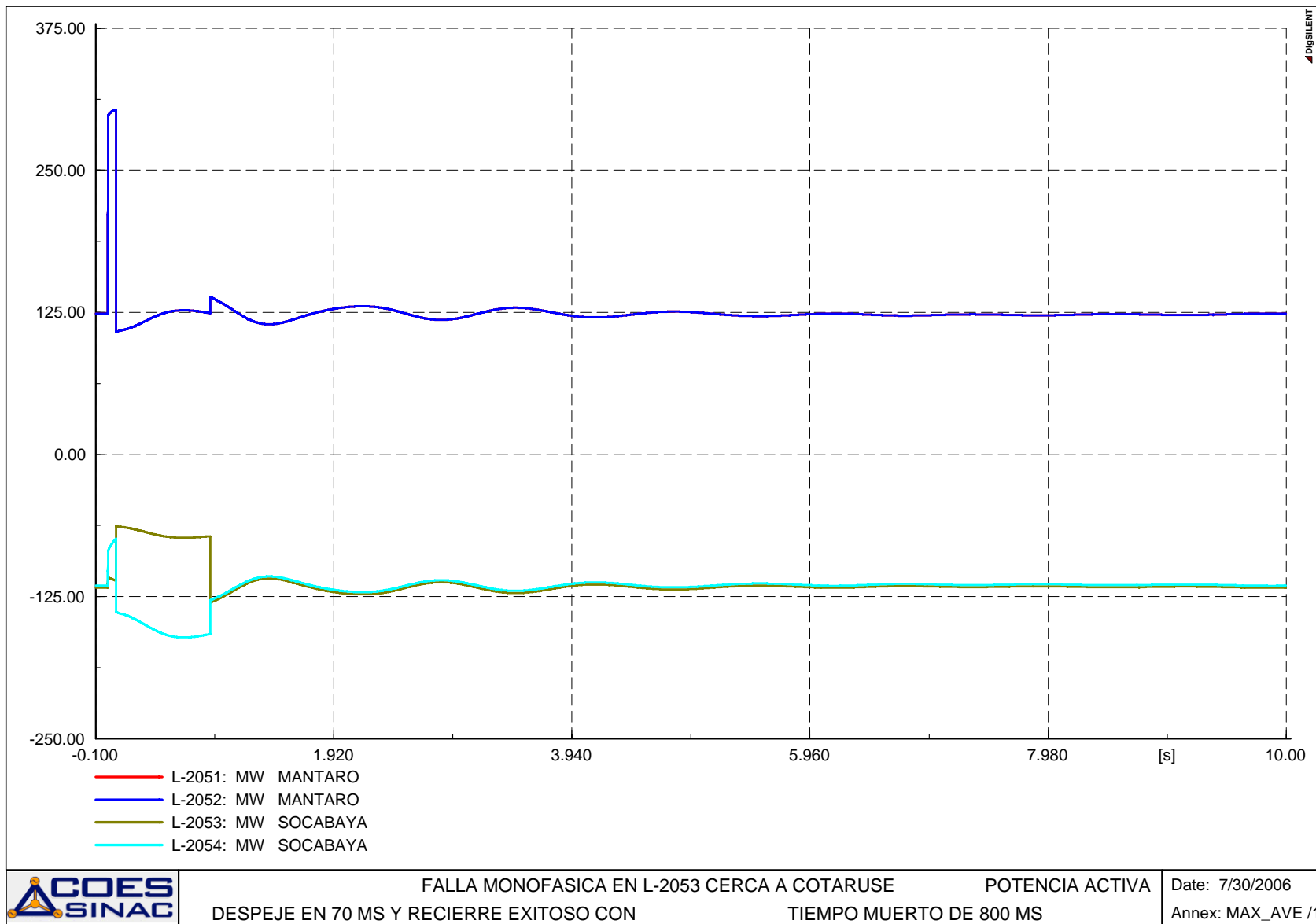
**SIMULACIONES DE ESTABILIDAD DE LA
LÍNEA MANTARO-SOCABAYA**

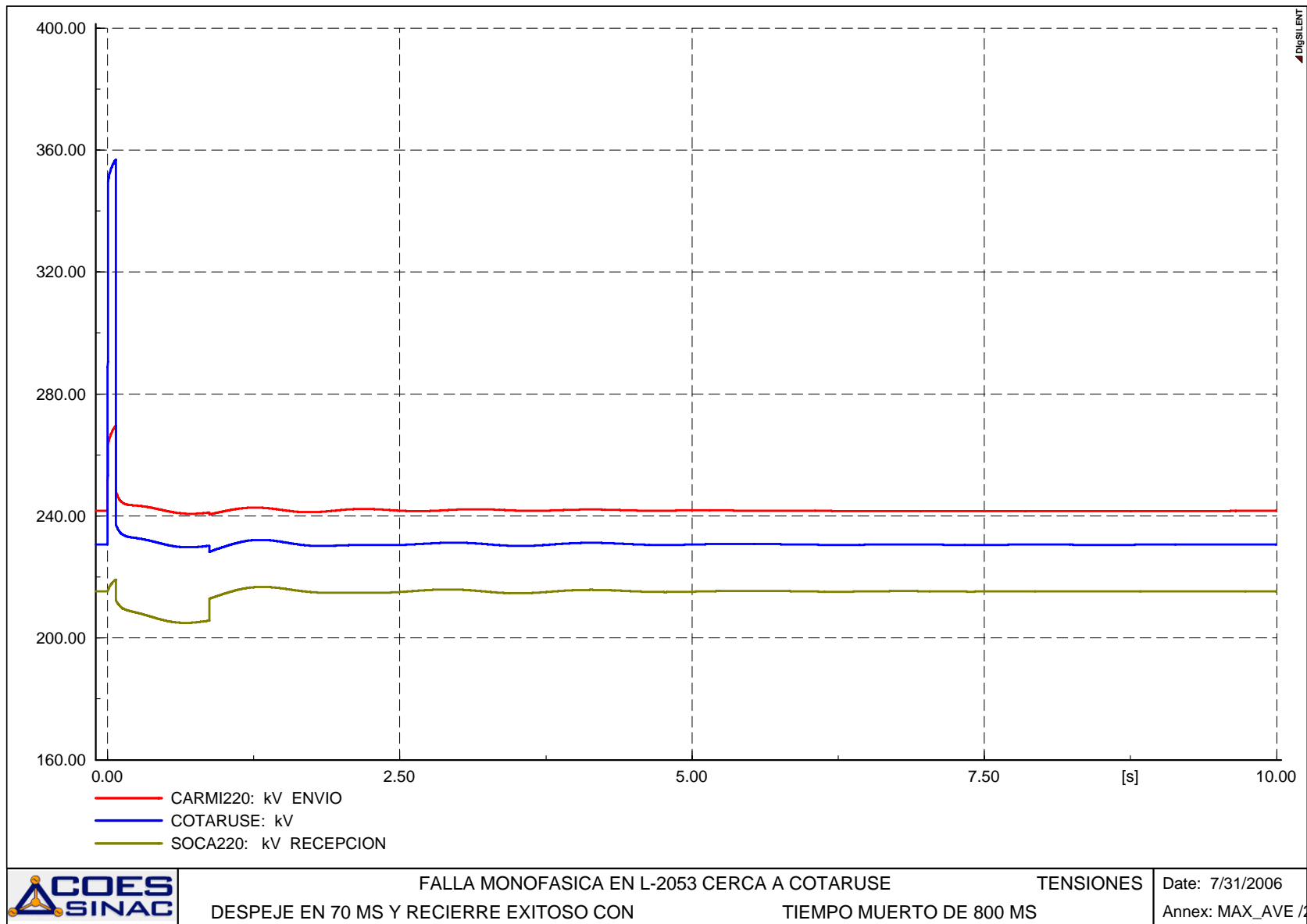
C.1

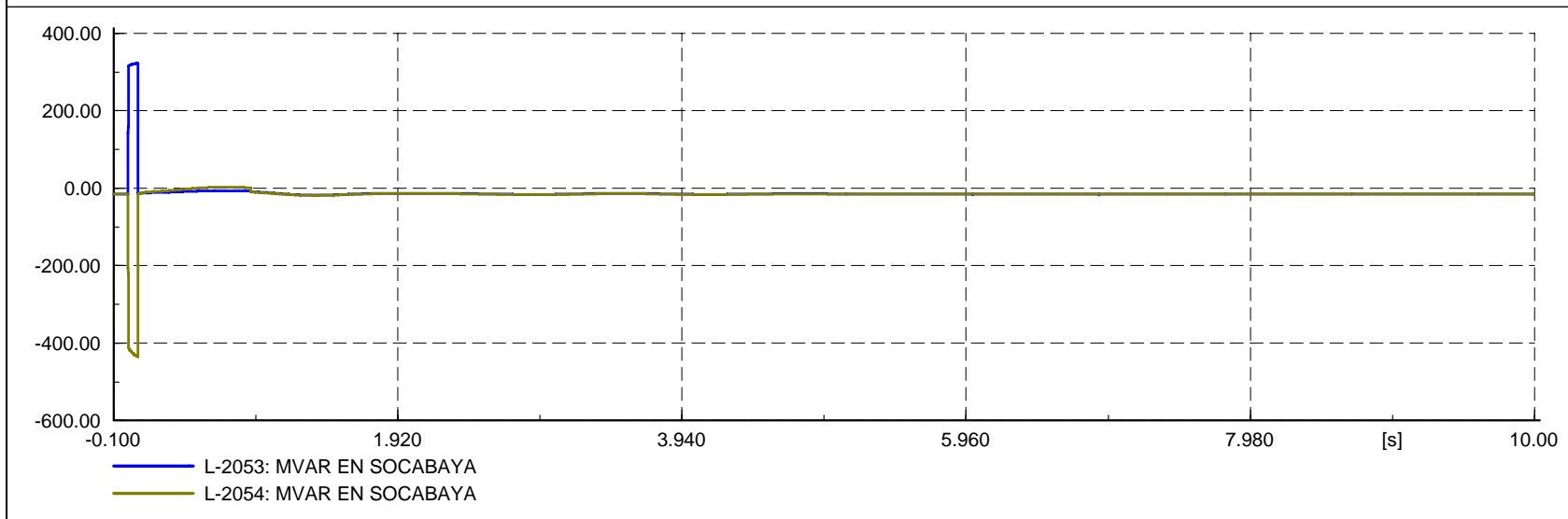
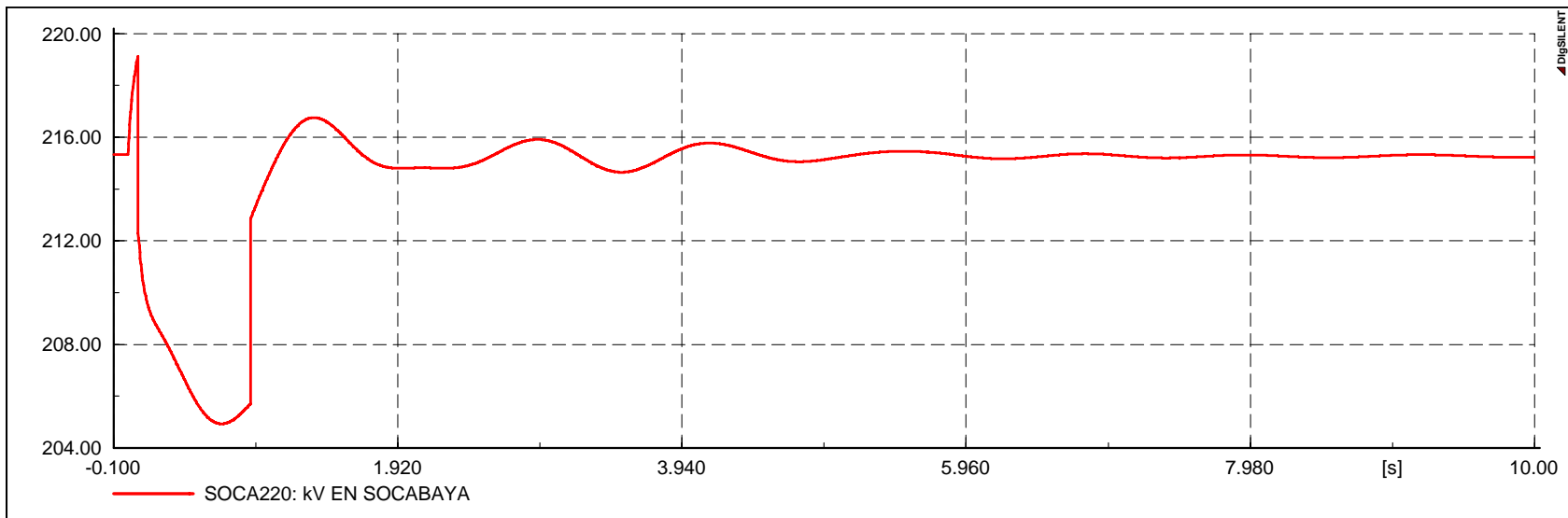
**LINEA MANTARO – SOCABAYA 220 kV
CON 4 BANCOS SERIE**

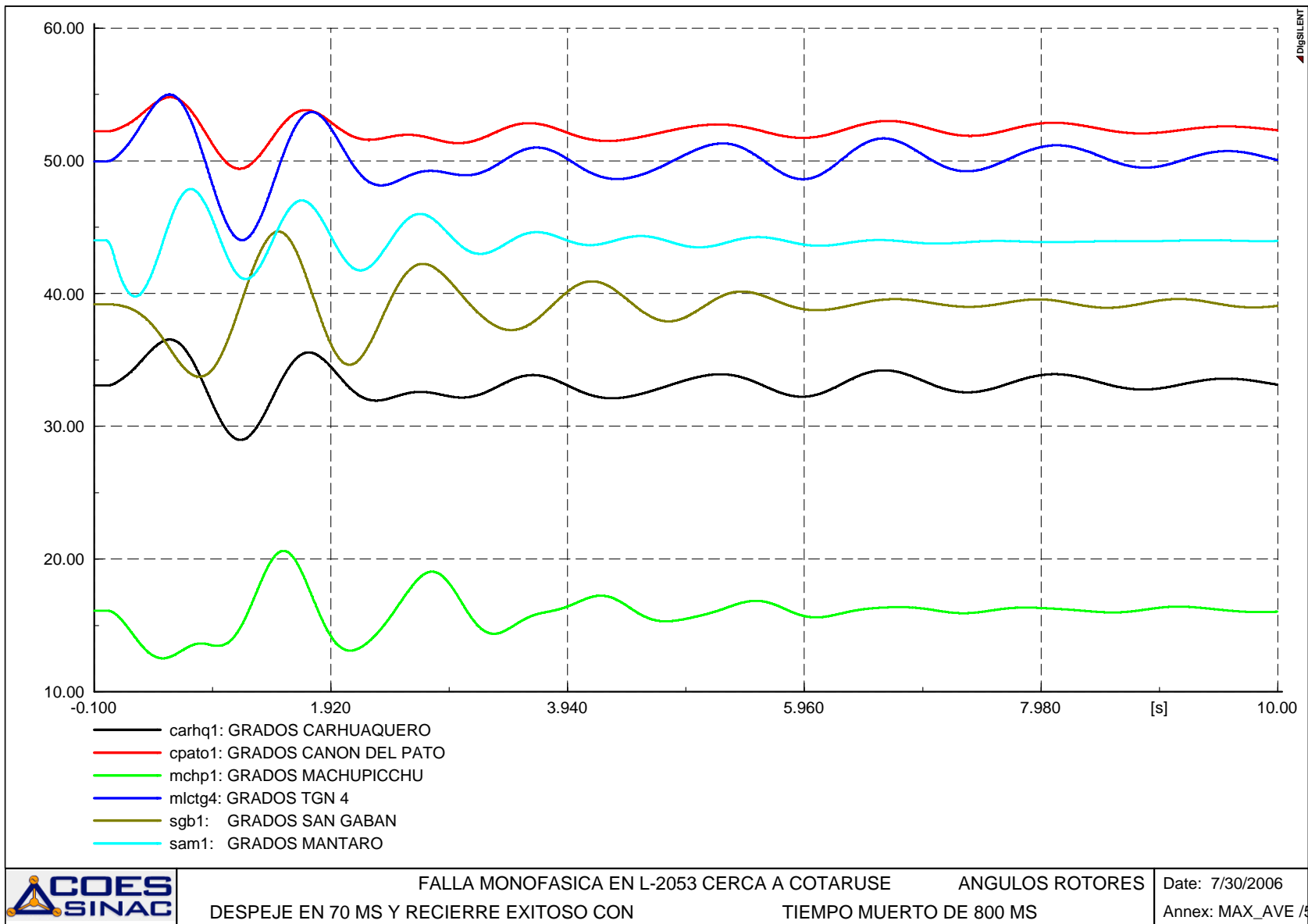
C.1.1

**FALLA MONOFASICA EN LA LINEA L-2053
CERCA DE COTARUSE, Y RECIERRE EXITOSO**



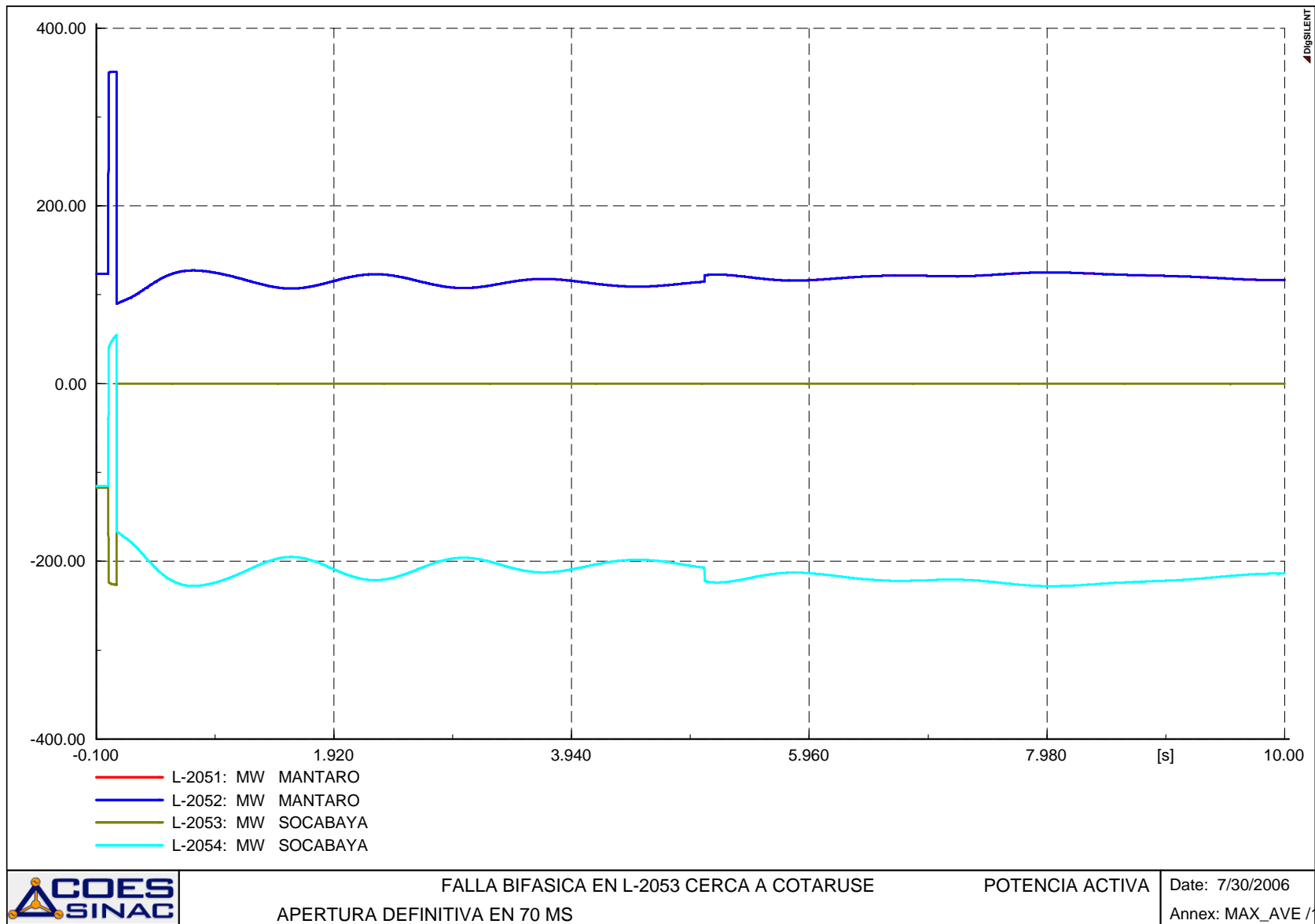


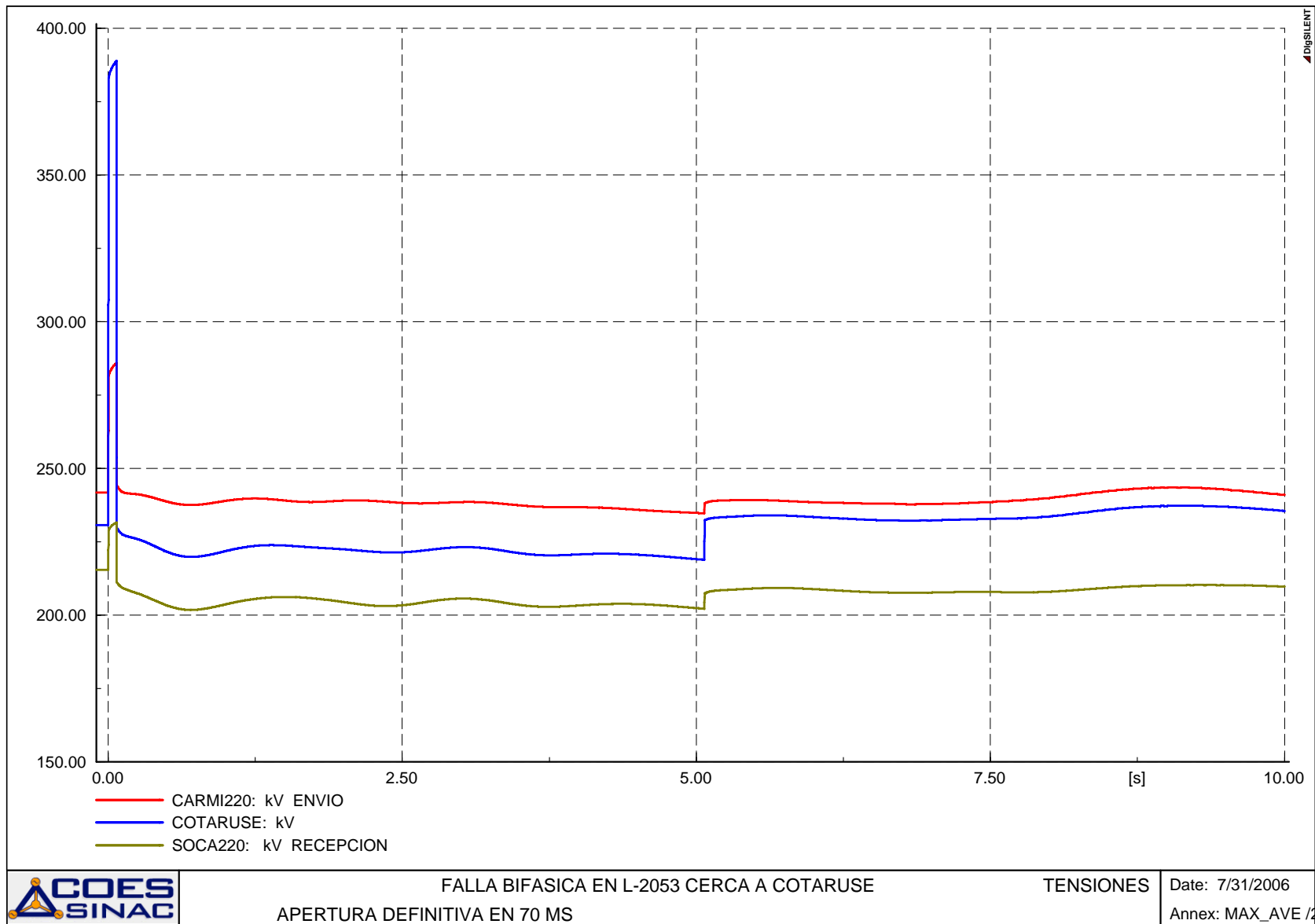


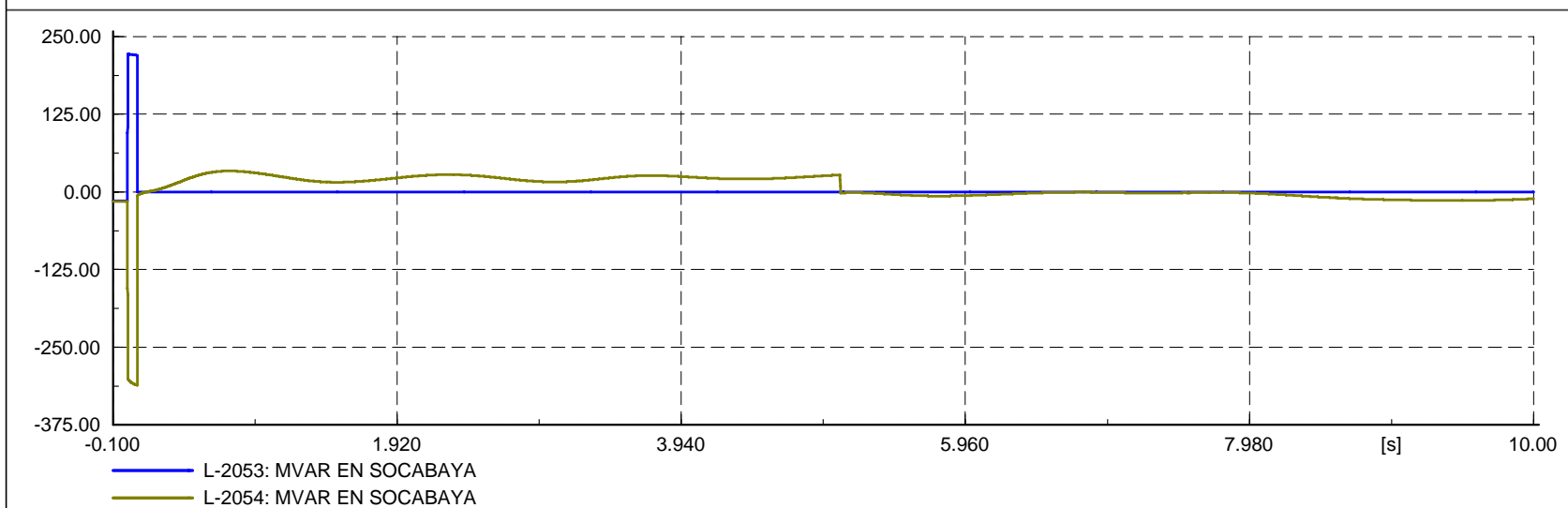
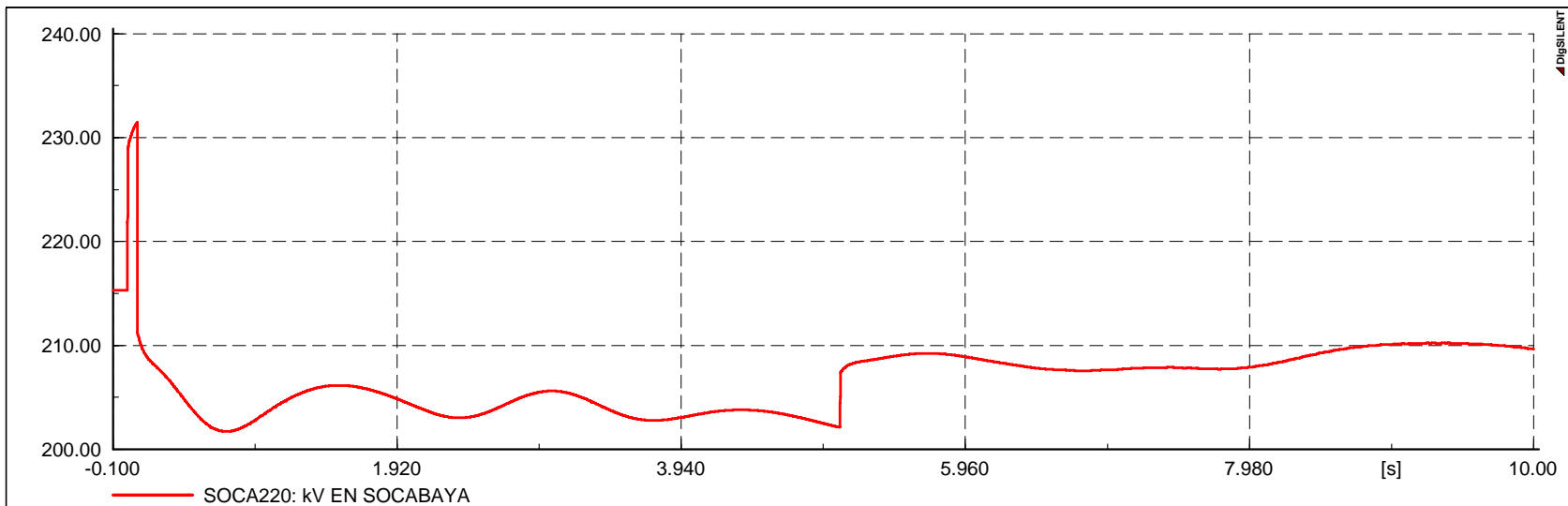


C.1.2

**FALLA BIFÁSICA EN LA LÍNEA L-2053 CERCA DE
COTARUSE, Y APERTURA DEFINITIVA**





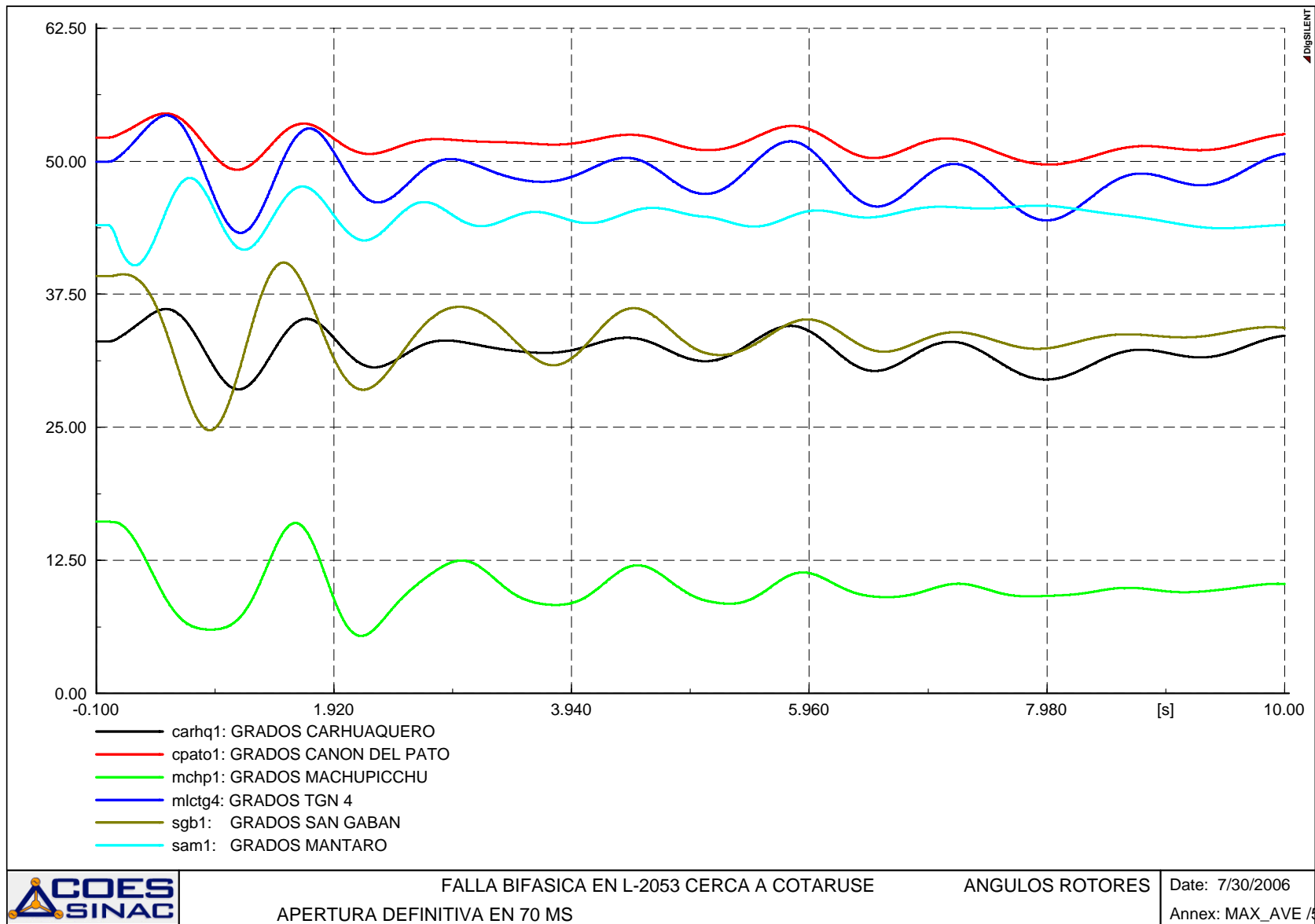


FALLA BIFASICA EN L-2053 CERCA A COTARUSE
APERTURA DEFINITIVA EN 70 MS

MVAr

Date: 7/30/2006

Annex: MAX_AVE /6

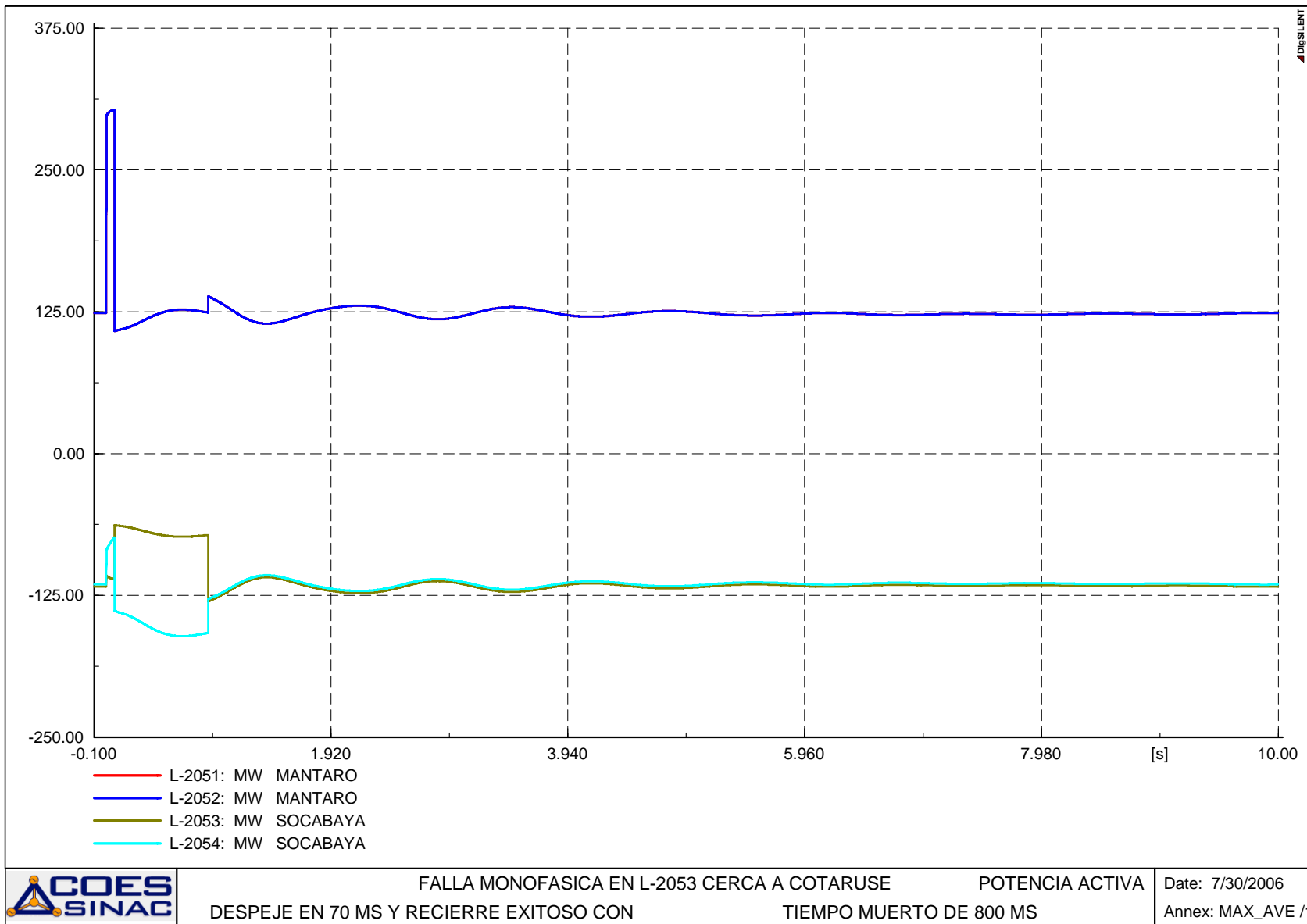


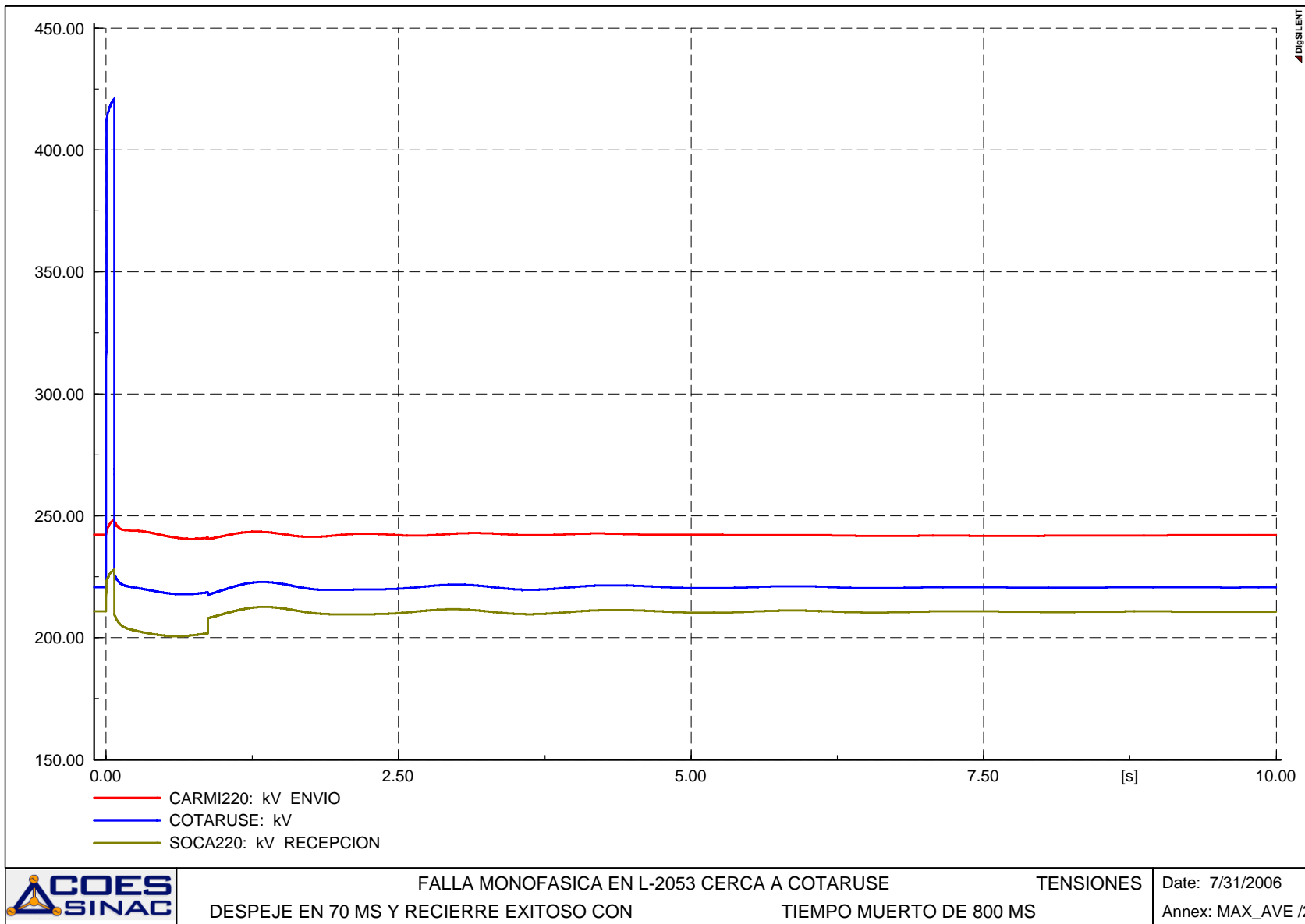
C.2

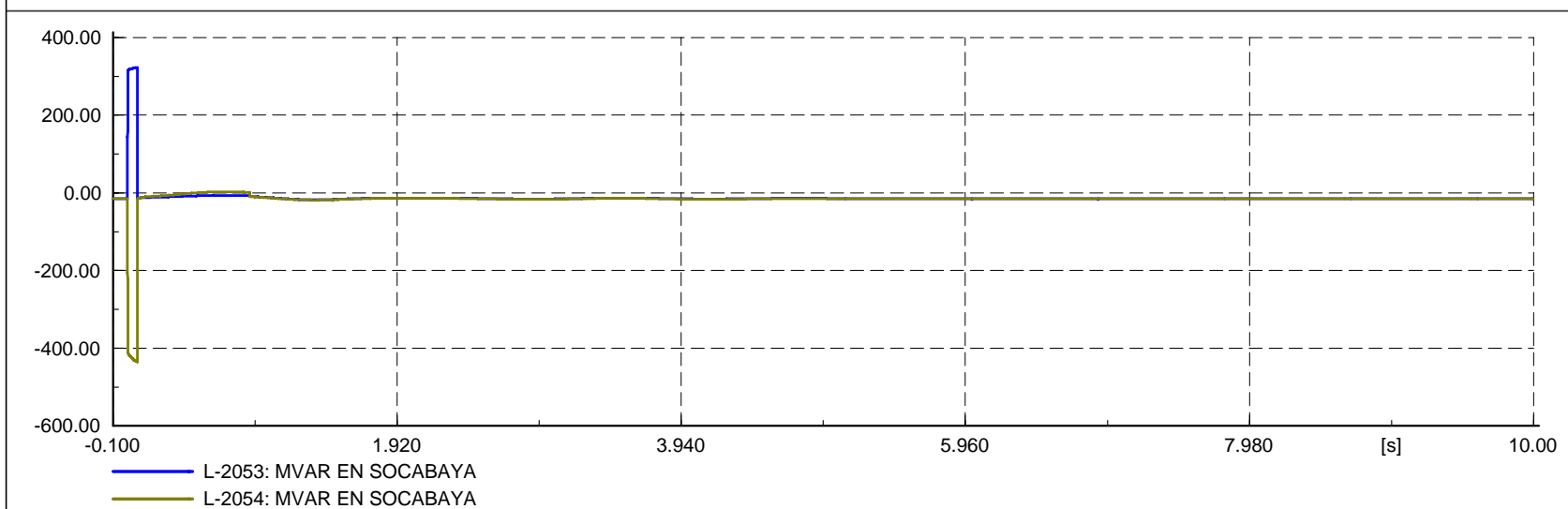
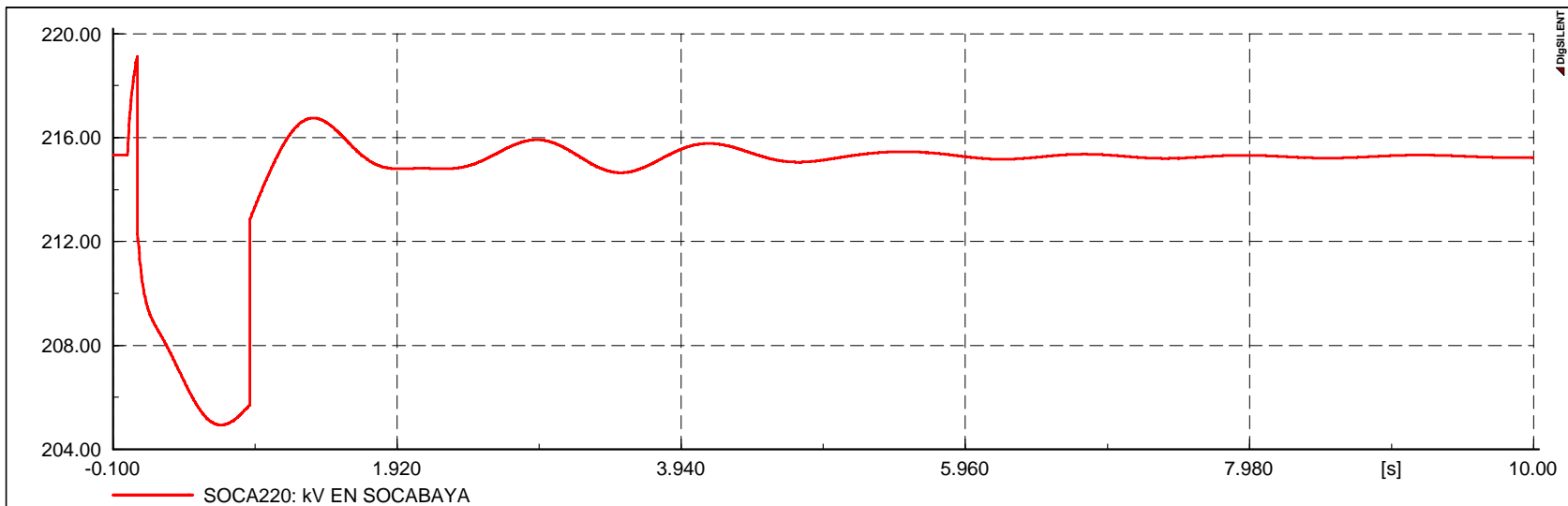
**LINEA MANTARO – SOCABAYA 220 kV
CON 2 BANCOS SERIE**

C.2.1

**FALLA MONOFASICA EN LA LINEA L-2053 CERCA DE
COTARUSE, Y RECIERRE EXITOSO**

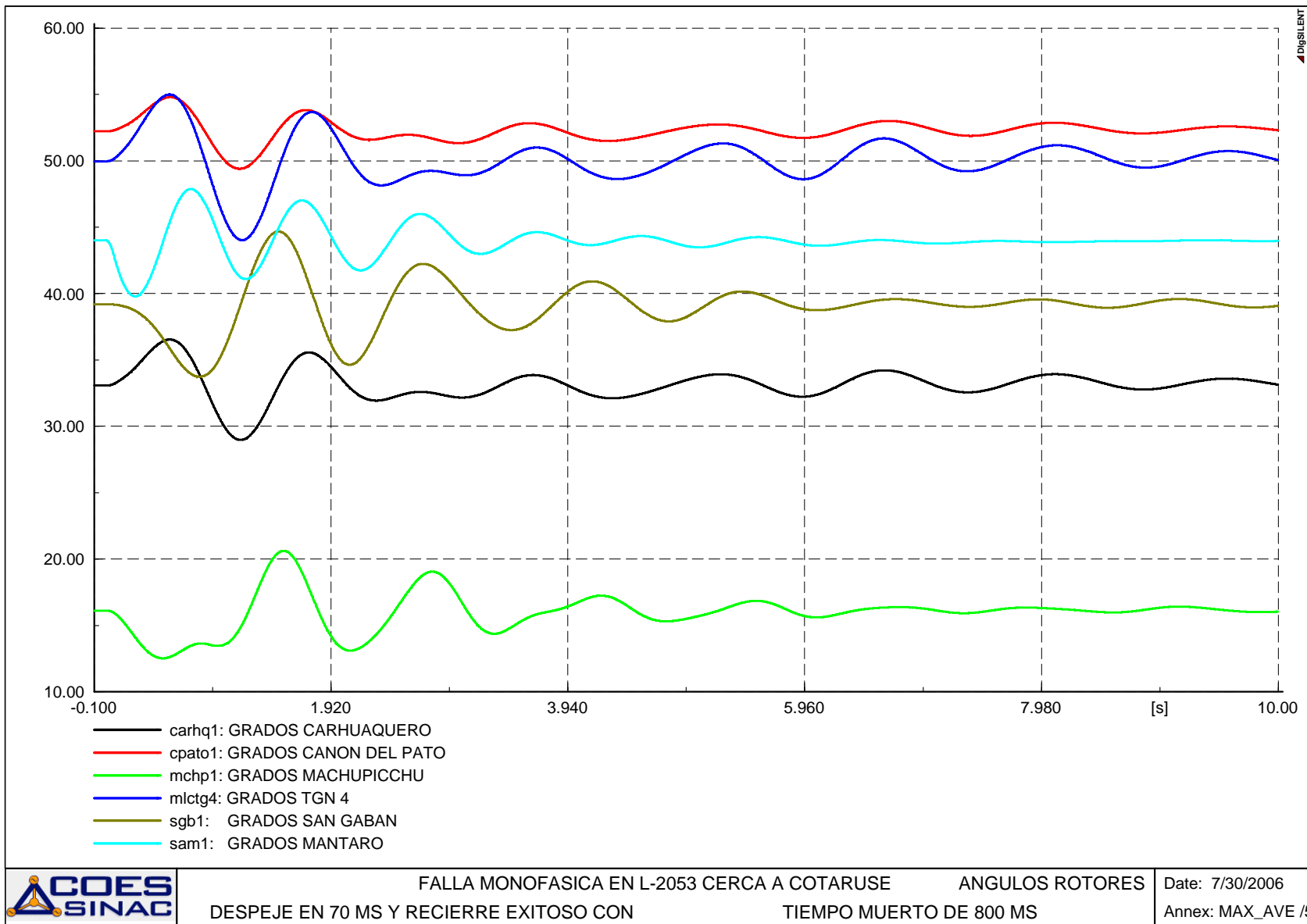






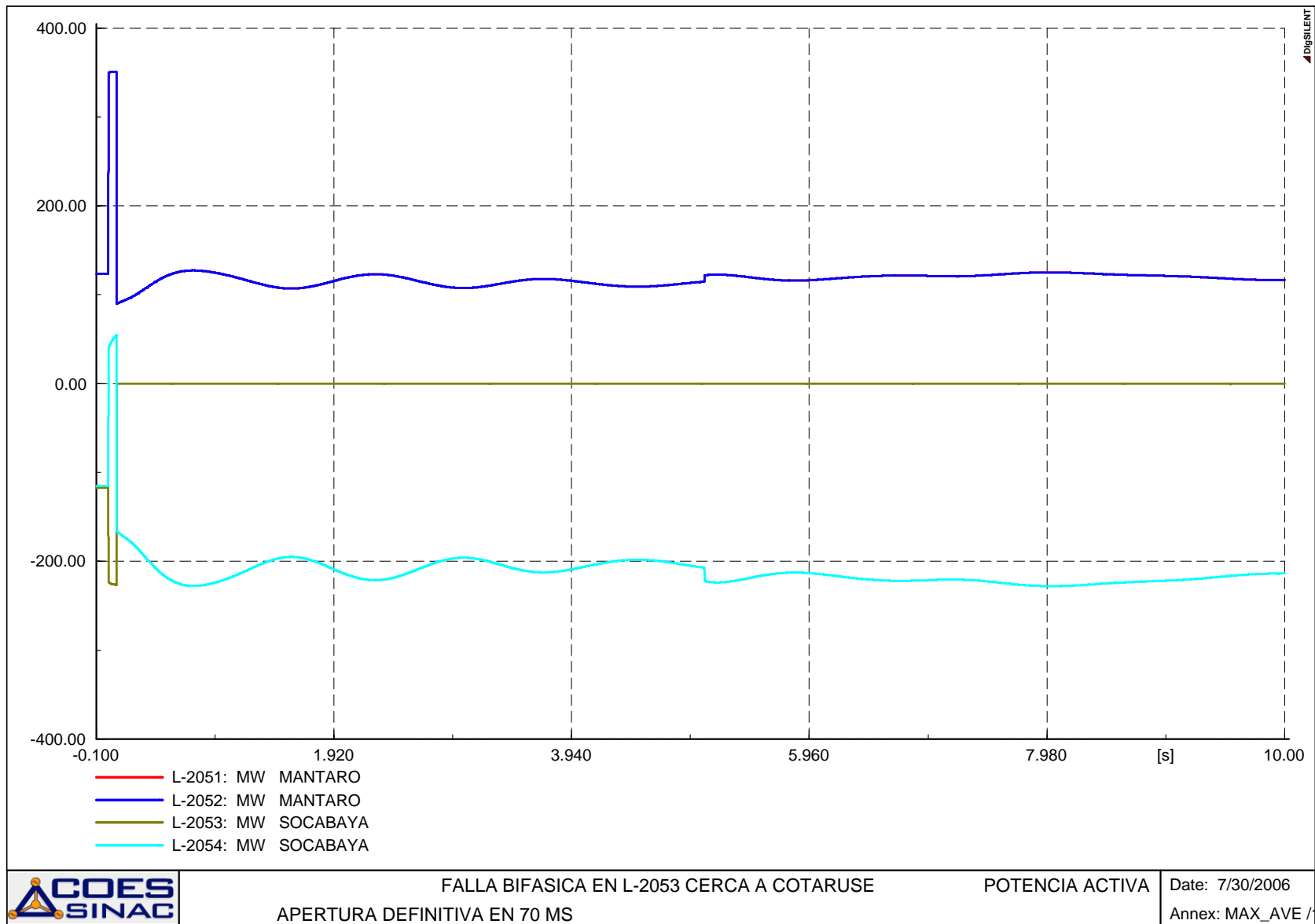
FALLA MONOFASICA EN L-2053 CERCA A COTARUSE
DESPEJE EN 70 MS Y RECIERRE EXITOSO CON TIEMPO MUERTO DE 800 MS

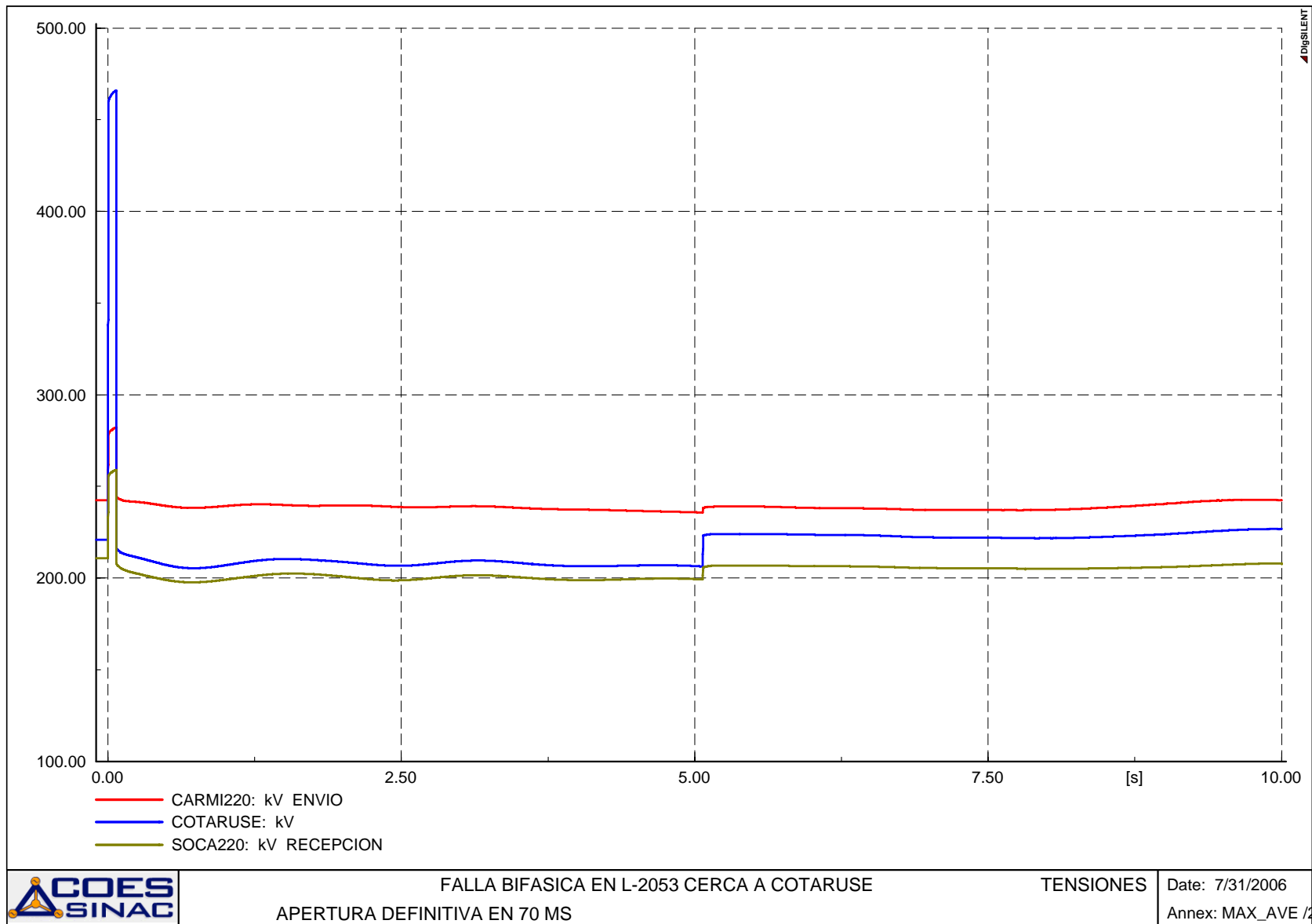
MVAr Date: 7/30/2006
Annex: MAX_AVE /6

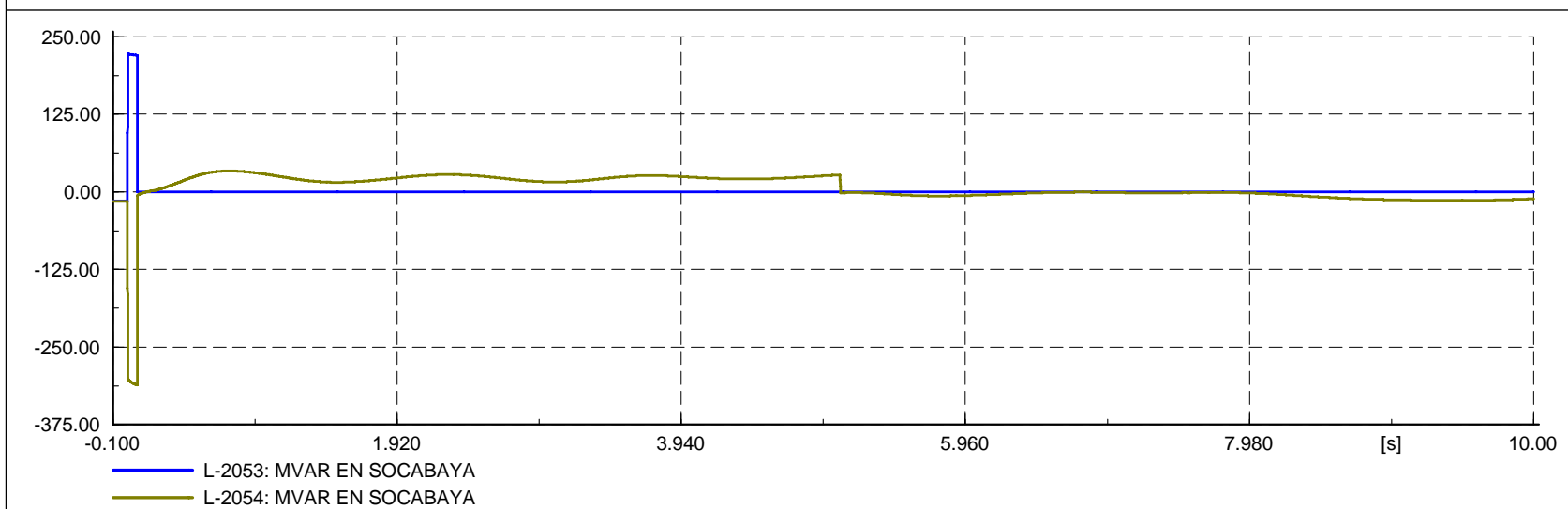
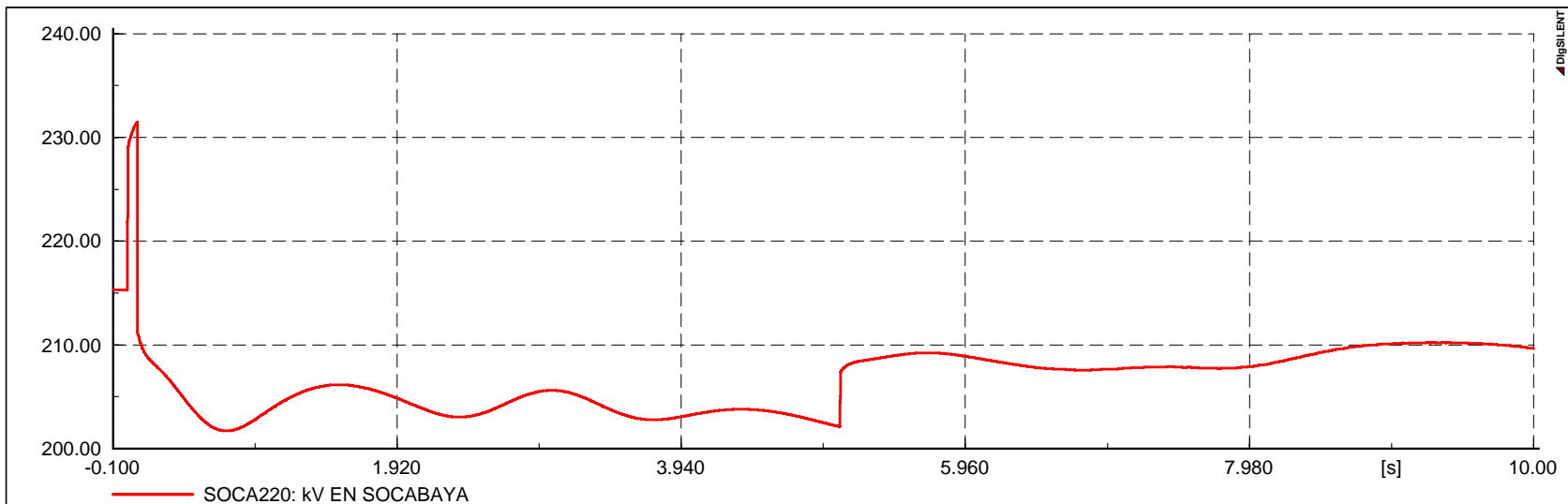


C.2.2

**FALLA BIFÁSICA EN LA LÍNEA L-2053 CERCA DE
COTARUSE, Y APERTURA DEFINITIVA**







FALLA BIFASICA EN L-2053 CERCA A COTARUSE
APERTURA DEFINITIVA EN 70 MS

MVar Date: 7/30/2006
Annex: MAX_AVE /6

